



Title Plan - DP 474511

Survey Number DP 474511
Surveyor Reference 1510-133562-02 Lakes Stages 2QRST
Surveyor Michael Peter Dewhirst
Survey Firm Harrison Grierson Consultants Ltd
Surveyor Declaration I Michael Peter Dewhirst, being a licensed cadastral surveyor, certify that:
(a) this dataset provided by me and its related survey are accurate, correct and in accordance with the Cadastral Survey Act 2002 and the Rules for Cadastral Survey 2010, and
(b) the survey was undertaken by me or under my personal direction.
Declared on 26 Jun 2014 02:57 PM

Survey Details

Dataset Description Lots 1-3, 801-867, 871-886, 900-902, 930-932 & 960-965 being a subdivision of Lot 103 DP 463737

Status Deposited

Land District South Auckland **Survey Class** Class A

Submitted Date 26/06/2014 **Survey Approval Date** 07/07/2014

Deposit Date 26/06/2014

Territorial Authorities

Tauranga City

Comprised In

CT 614331

Created Parcels

Parcels	Parcel Intent	Area	CT Reference
Area AD Deposited Plan 474511	Easement		
Area Y Deposited Plan 474511	Easement		
Area Z Deposited Plan 474511	Easement		
Area AA Deposited Plan 474511	Easement		
Area AB Deposited Plan 474511	Easement		
Area AC Deposited Plan 474511	Easement		
Area AE Deposited Plan 474511	Easement		
Area AF Deposited Plan 474511	Easement		
Lot 801 Deposited Plan 474511	Fee Simple Title	0.0592 Ha	651568
Lot 802 Deposited Plan 474511	Fee Simple Title	0.0601 Ha	651569
Lot 803 Deposited Plan 474511	Fee Simple Title	0.0716 Ha	651570
Lot 804 Deposited Plan 474511	Fee Simple Title	0.0764 Ha	651571
Lot 805 Deposited Plan 474511	Fee Simple Title	0.0619 Ha	651572
Lot 806 Deposited Plan 474511	Fee Simple Title	0.0589 Ha	651573
Lot 807 Deposited Plan 474511	Fee Simple Title	0.0589 Ha	651574
Lot 808 Deposited Plan 474511	Fee Simple Title	0.0577 Ha	651575
Lot 809 Deposited Plan 474511	Fee Simple Title	0.0584 Ha	651576
Lot 810 Deposited Plan 474511	Fee Simple Title	0.0581 Ha	651577
Lot 811 Deposited Plan 474511	Fee Simple Title	0.0585 Ha	651578
Lot 812 Deposited Plan 474511	Fee Simple Title	0.0587 Ha	651579

Title Plan - DP 474511

Created Parcels

Parcels	Parcel Intent	Area	CT Reference
Lot 813 Deposited Plan 474511	Fee Simple Title	0.0596 Ha	651580
Lot 814 Deposited Plan 474511	Fee Simple Title	0.0597 Ha	651581
Lot 815 Deposited Plan 474511	Fee Simple Title	0.0591 Ha	651582
Lot 816 Deposited Plan 474511	Fee Simple Title	0.0588 Ha	651583
Lot 817 Deposited Plan 474511	Fee Simple Title	0.0584 Ha	651584
Lot 818 Deposited Plan 474511	Fee Simple Title	0.0631 Ha	651585
Lot 819 Deposited Plan 474511	Fee Simple Title	0.0681 Ha	651586
Lot 820 Deposited Plan 474511	Fee Simple Title	0.0527 Ha	651587
Lot 821 Deposited Plan 474511	Fee Simple Title	0.0552 Ha	651588
Lot 822 Deposited Plan 474511	Fee Simple Title	0.0553 Ha	651589
Lot 823 Deposited Plan 474511	Fee Simple Title	0.0553 Ha	651590
Lot 824 Deposited Plan 474511	Fee Simple Title	0.0559 Ha	651591
Lot 825 Deposited Plan 474511	Fee Simple Title	0.0570 Ha	651592
Lot 826 Deposited Plan 474511	Fee Simple Title	0.0569 Ha	651593
Lot 827 Deposited Plan 474511	Fee Simple Title	0.0558 Ha	651594
Lot 828 Deposited Plan 474511	Fee Simple Title	0.0558 Ha	651595
Lot 829 Deposited Plan 474511	Fee Simple Title	0.0559 Ha	651596
Lot 830 Deposited Plan 474511	Fee Simple Title	0.0507 Ha	651597
Lot 831 Deposited Plan 474511	Fee Simple Title	0.0811 Ha	651598
Lot 832 Deposited Plan 474511	Fee Simple Title	0.0789 Ha	651599
Lot 833 Deposited Plan 474511	Fee Simple Title	0.0992 Ha	651600
Lot 834 Deposited Plan 474511	Fee Simple Title	0.0734 Ha	651601
Lot 835 Deposited Plan 474511	Fee Simple Title	0.0523 Ha	651602
Lot 836 Deposited Plan 474511	Fee Simple Title	0.0507 Ha	651603
Lot 837 Deposited Plan 474511	Fee Simple Title	0.0501 Ha	651604
Lot 838 Deposited Plan 474511	Fee Simple Title	0.0532 Ha	651605
Lot 839 Deposited Plan 474511	Fee Simple Title	0.0512 Ha	651606
Lot 840 Deposited Plan 474511	Fee Simple Title	0.0505 Ha	651607
Lot 841 Deposited Plan 474511	Fee Simple Title	0.0728 Ha	651608
Lot 842 Deposited Plan 474511	Fee Simple Title	0.0806 Ha	651609
Lot 843 Deposited Plan 474511	Fee Simple Title	0.0540 Ha	651610
Lot 844 Deposited Plan 474511	Fee Simple Title	0.0529 Ha	651611
Lot 845 Deposited Plan 474511	Fee Simple Title	0.0543 Ha	651612
Lot 846 Deposited Plan 474511	Fee Simple Title	0.0555 Ha	651613
Lot 847 Deposited Plan 474511	Fee Simple Title	0.0506 Ha	651614
Lot 848 Deposited Plan 474511	Fee Simple Title	0.1055 Ha	651615
Lot 849 Deposited Plan 474511	Fee Simple Title	0.0698 Ha	651616
Lot 850 Deposited Plan 474511	Fee Simple Title	0.1288 Ha	651617
Lot 851 Deposited Plan 474511	Fee Simple Title	0.2244 Ha	651618
Lot 852 Deposited Plan 474511	Fee Simple Title	0.2151 Ha	651619
Lot 853 Deposited Plan 474511	Fee Simple Title	0.1144 Ha	651620
Lot 854 Deposited Plan 474511	Fee Simple Title	0.1741 Ha	651621
Lot 855 Deposited Plan 474511	Fee Simple Title	0.1165 Ha	651622
Lot 856 Deposited Plan 474511	Fee Simple Title	0.0619 Ha	651623

Title Plan - DP 474511

Created Parcels

Parcels	Parcel Intent	Area	CT Reference
Lot 857 Deposited Plan 474511	Fee Simple Title	0.0563 Ha	651624
Lot 858 Deposited Plan 474511	Fee Simple Title	0.0552 Ha	651625
Lot 859 Deposited Plan 474511	Fee Simple Title	0.0504 Ha	651626
Lot 860 Deposited Plan 474511	Fee Simple Title	0.0708 Ha	651627
Lot 861 Deposited Plan 474511	Fee Simple Title	0.0640 Ha	651628
Lot 862 Deposited Plan 474511	Fee Simple Title	0.0504 Ha	651629
Lot 863 Deposited Plan 474511	Fee Simple Title	0.0525 Ha	651630
Lot 864 Deposited Plan 474511	Fee Simple Title	0.0568 Ha	651631
Lot 865 Deposited Plan 474511	Fee Simple Title	0.0606 Ha	651632
Lot 866 Deposited Plan 474511	Fee Simple Title	0.0420 Ha	651633
Lot 867 Deposited Plan 474511	Fee Simple Title	0.0703 Ha	651634
Lot 871 Deposited Plan 474511	Fee Simple Title	0.0543 Ha	651635
Lot 872 Deposited Plan 474511	Fee Simple Title	0.0450 Ha	651636
Lot 873 Deposited Plan 474511	Fee Simple Title	0.0450 Ha	651637
Lot 874 Deposited Plan 474511	Fee Simple Title	0.0450 Ha	651638
Lot 875 Deposited Plan 474511	Fee Simple Title	0.0450 Ha	651639
Lot 876 Deposited Plan 474511	Fee Simple Title	0.0448 Ha	651640
Lot 877 Deposited Plan 474511	Fee Simple Title	0.0445 Ha	651641
Lot 878 Deposited Plan 474511	Fee Simple Title	0.0475 Ha	651642
Lot 879 Deposited Plan 474511	Fee Simple Title	0.0545 Ha	651643
Lot 880 Deposited Plan 474511	Fee Simple Title	0.0428 Ha	651644
Lot 881 Deposited Plan 474511	Fee Simple Title	0.0507 Ha	651645
Lot 882 Deposited Plan 474511	Fee Simple Title	0.0478 Ha	651646
Lot 883 Deposited Plan 474511	Fee Simple Title	0.0521 Ha	651647
Lot 884 Deposited Plan 474511	Fee Simple Title	0.0605 Ha	651648
Lot 885 Deposited Plan 474511	Fee Simple Title	0.0505 Ha	651649
Lot 886 Deposited Plan 474511	Fee Simple Title	0.0491 Ha	651650
Lot 3 Deposited Plan 474511	Fee Simple Title	0.1580 Ha	651651
	Road	1.6569 Ha	
	Road	0.5812 Ha	
	Road	0.3466 Ha	
Lot 930 Deposited Plan 474511	Vesting on Deposit for Recreation Reserve (Territorial Authority)	1.4067 Ha	651654
	Road	0.0432 Ha	651655
Lot 932 Deposited Plan 474511	Vesting on Deposit for Local Purpose Reserve	0.2263 Ha	651656
Lot 960 Deposited Plan 474511	Fee Simple Title	0.0293 Ha	Multiple
Lot 961 Deposited Plan 474511	Fee Simple Title	0.1353 Ha	Multiple
Lot 962 Deposited Plan 474511	Fee Simple Title	0.0310 Ha	Multiple
Lot 963 Deposited Plan 474511	Fee Simple Title	0.0106 Ha	Multiple
Lot 964 Deposited Plan 474511	Fee Simple Title	0.0102 Ha	Multiple
Lot 965 Deposited Plan 474511	Fee Simple Title	0.0106 Ha	Multiple
Lot 1 Deposited Plan 474511	Fee Simple Title	0.3029 Ha	651657

Title Plan - DP 474511

Created Parcels

Parcels	Parcel Intent	Area	CT Reference
Lot 2 Deposited Plan 474511	Fee Simple Title	8.5280 Ha	651658
Area A Deposited Plan 474511	Easement		
Area B Deposited Plan 474511	Easement		
Area AG Deposited Plan 474511	Easement		
Area C Deposited Plan 474511	Easement		
Area E Deposited Plan 474511	Easement		
Area F Deposited Plan 474511	Easement		
Area G Deposited Plan 474511	Easement		
Area H Deposited Plan 474511	Easement		
Area I Deposited Plan 474511	Easement		
Area J Deposited Plan 474511	Easement		
Area K Deposited Plan 474511	Easement		
Area L Deposited Plan 474511	Easement		
Area M Deposited Plan 474511	Easement		
Area N Deposited Plan 474511	Easement		
Area O Deposited Plan 474511	Easement		
Area P Deposited Plan 474511	Easement		
Area Q Deposited Plan 474511	Easement		
Area R Deposited Plan 474511	Easement		
Area S Deposited Plan 474511	Easement		
Area T Deposited Plan 474511	Easement		
Area U Deposited Plan 474511	Easement		
Area V Deposited Plan 474511	Easement		
Area W Deposited Plan 474511	Easement		
Area X Deposited Plan 474511	Easement		
Area RA Deposited Plan 474511	Land Covenant		
Area RB Deposited Plan 474511	Land Covenant		
Area RC Deposited Plan 474511	Land Covenant		
Area RO Deposited Plan 474511	Land Covenant		
Area RD Deposited Plan 474511	Land Covenant		
Area RE Deposited Plan 474511	Land Covenant		
Area RF Deposited Plan 474511	Land Covenant		
Area RG Deposited Plan 474511	Land Covenant		
Area RH Deposited Plan 474511	Land Covenant		
Area RI Deposited Plan 474511	Land Covenant		
Area RJ Deposited Plan 474511	Land Covenant		
Area RK Deposited Plan 474511	Land Covenant		
Area RL Deposited Plan 474511	Land Covenant		
Area RM Deposited Plan 474511	Land Covenant		
Area RN Deposited Plan 474511	Land Covenant		
Area D Deposited Plan 474511	Easement		
Total Area		18.9287 Ha	

**Land Registration District**

South Auckland

Plan Number

DP 474511

TCC Ref: RC21332

Harrison Grierson Ref: 1510-133562-02

Memorandum of Easements (Pursuant to s243 Resource Management Act 1991)			
Purpose	Shown	Servient Tenement	Dominant Tenement
Right of Way, Right to drain Water & Sewage, Right to convey Electricity & Gas Right to convey Telecommunications and Computer Media	A	Lot 960 hereon	Lots 803-805 hereon
	B	Lot 961 hereon	Lots 836-842 hereon
	C	Lot 962 hereon	Lots 854-856 hereon
	D	Lot 963 hereon	Lots 860 & 861 hereon
	E	Lot 964 hereon	Lots 864 & 865 hereon
	F	Lot 965 hereon	Lots 884 & 885 hereon

Memorandum of Easements in Gross (Pursuant to s243 Resource Management Act 1991)			
Purpose	Shown	Servient Tenement	Grantee
Right to drain Water & Sewage	G	Lot 831 hereon	Tauranga City Council
	H	Lot 802 hereon	
	I	Lot 836 hereon	
	J	Lot 837 hereon	
	K	Lot 838 hereon	
	L	Lot 828 hereon	
	M	Lot 827 hereon	
	N	Lot 826 hereon	



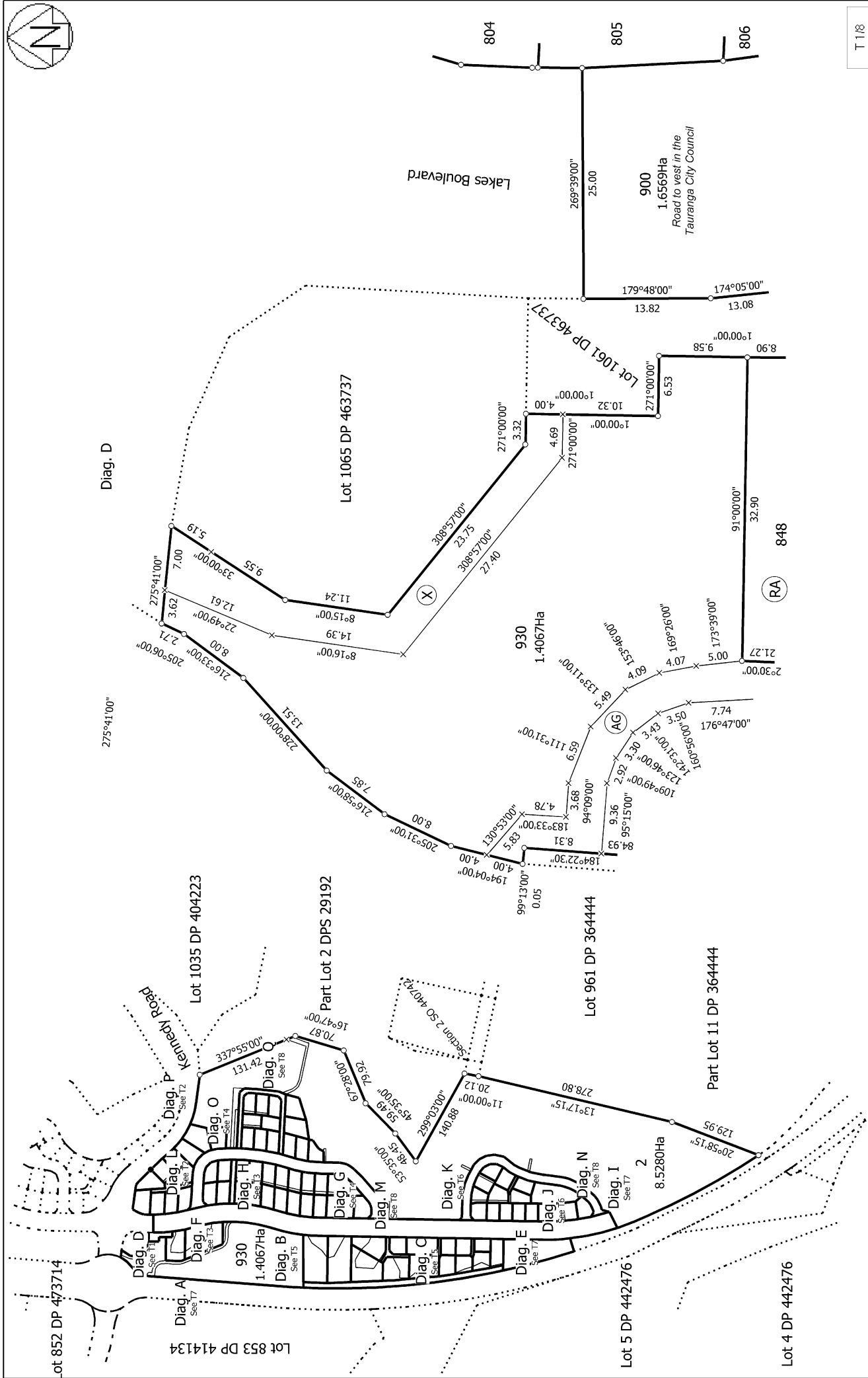
Memorandum of Easements in Gross (Pursuant to s243 Resource Management Act 1991)			
Purpose	Shown	Servient Tenement	Grantee
Right to drain Water & Sewage	A	Lot 960 hereon	Tauranga City Council
	C	Lot 962 hereon	
	D	Lot 963 hereon	
	E	Lot 964 hereon	
	F	Lot 965 hereon	
	O	Lot 825 hereon	
	P	Lot 824 hereon	
	Q	Lot 823 hereon	
	R	Lot 822 hereon	
	S	Lot 821 hereon	
	T	Lot 880 hereon	
	U	Lot 884 hereon	
	V	Lot 885 hereon	
W	Lot 881 hereon		
Y	Lot 2 hereon		
Right to drain Water & Sewage Right to convey Water	B	Lot 961 hereon	
Right to drain Water	Z, AA, AB, AC, AD, AE, AF	Lot 2 hereon	
Right to convey Water	AG	Lot 930 hereon	



Schedule of Proposed Easements in Gross			
Purpose	Shown	Servient Tenement	Grantee
Right to convey Electricity	B	Lot 961 hereon	Powerco Ltd
Right to convey Telecommunications and Computer Media	A	Lot 960 hereon	Waikato Networks Ltd
	B	Lot 961 hereon	
	C	Lot 962 hereon	
	D	Lot 963 hereon	
	E	Lot 964 hereon	
	F	Lot 965 hereon	
Right to convey Gas	A	Lot 960 hereon	Vector Gas Ltd
	B	Lot 961 hereon	
	C	Lot 962 hereon	
	D	Lot 963 hereon	
	E	Lot 964 hereon	
	F	Lot 965 hereon	

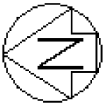
Schedule of Existing Easements in Gross (Pursuant to s243 Resource Management Act 1991)			
Purpose	Shown	Servient Tenement	Grantee / Document Number
Right to convey Electricity	X	Lot 930 hereon	Powerco Ltd EI 9403985.5
Right to drain Sewage			Tauranga City Council EI 9403985.6

Areas RA - RO are subject to a Consent Notice



T 1/8

<p>Land District: South Auckland</p>	<p>Surveyor: Michael Peter Dewhirst Firm: Harrison Grierson Consultants Ltd</p>	<p>Title Plan DP 474511</p>	<p>Deposited on: 26/06/2014</p>
<p>Lots 1-3, 801-867, 871-886, 900-902, 930-932 & 960-965 being a subdivision of Lot 103 DP 463737</p>			
<p>Digitally Generated Plan Generated on: 16/07/2014 12:29:00 Page 8 of 15</p>			



Diag. L



Diag. P

2

8.5280Ha

833

803

804

805

806

807

808

809

831

832

833

834

900

901

931

8.5280Ha

8.5280Ha

0.0716Ha

0.0764Ha

0.0619Ha

0.0589Ha

0.0589Ha

0.0577Ha

0.0584Ha

0.0559Ha

0.0811Ha

0.0789Ha

0.0992Ha

0.0734Ha

1.6569Ha

0.5812Ha

0.5812Ha

8.5280Ha

8.5280Ha

0.0716Ha

0.0764Ha

0.0619Ha

0.0589Ha

0.0589Ha

0.0577Ha

0.0584Ha

0.0559Ha

0.0811Ha

0.0789Ha

0.0992Ha

0.0734Ha

1.6569Ha

0.5812Ha

0.5812Ha

8.5280Ha

8.5280Ha

0.0716Ha

0.0764Ha

0.0619Ha

0.0589Ha

0.0589Ha

0.0577Ha

0.0584Ha

0.0559Ha

0.0811Ha

0.0789Ha

0.0992Ha

0.0734Ha

1.6569Ha

0.5812Ha

0.5812Ha

8.5280Ha

8.5280Ha

0.0716Ha

0.0764Ha

0.0619Ha

0.0589Ha

0.0589Ha

0.0577Ha

0.0584Ha

0.0559Ha

0.0811Ha

0.0789Ha

0.0992Ha

0.0734Ha

1.6569Ha

0.5812Ha

0.5812Ha

8.5280Ha

8.5280Ha

0.0716Ha

0.0764Ha

0.0619Ha

0.0589Ha

0.0589Ha

0.0577Ha

0.0584Ha

0.0559Ha

0.0811Ha

0.0789Ha

0.0992Ha

0.0734Ha

1.6569Ha

0.5812Ha

0.5812Ha

8.5280Ha

8.5280Ha

0.0716Ha

0.0764Ha

0.0619Ha

0.0589Ha

0.0589Ha

0.0577Ha

0.0584Ha

0.0559Ha

0.0811Ha

0.0789Ha

0.0992Ha

0.0734Ha

1.6569Ha

0.5812Ha

0.5812Ha

8.5280Ha

8.5280Ha

0.0716Ha

0.0764Ha

0.0619Ha

0.0589Ha

0.0589Ha

0.0577Ha

0.0584Ha

0.0559Ha

0.0811Ha

0.0789Ha

0.0992Ha

0.0734Ha

1.6569Ha

0.5812Ha

0.5812Ha

8.5280Ha

8.5280Ha

0.0716Ha

0.0764Ha

T 2/8

Land District: South Auckland

Digitally Generated Plan

Generated on: 16/07/2014 12:28:59; Page 9 of 15

Title Plan

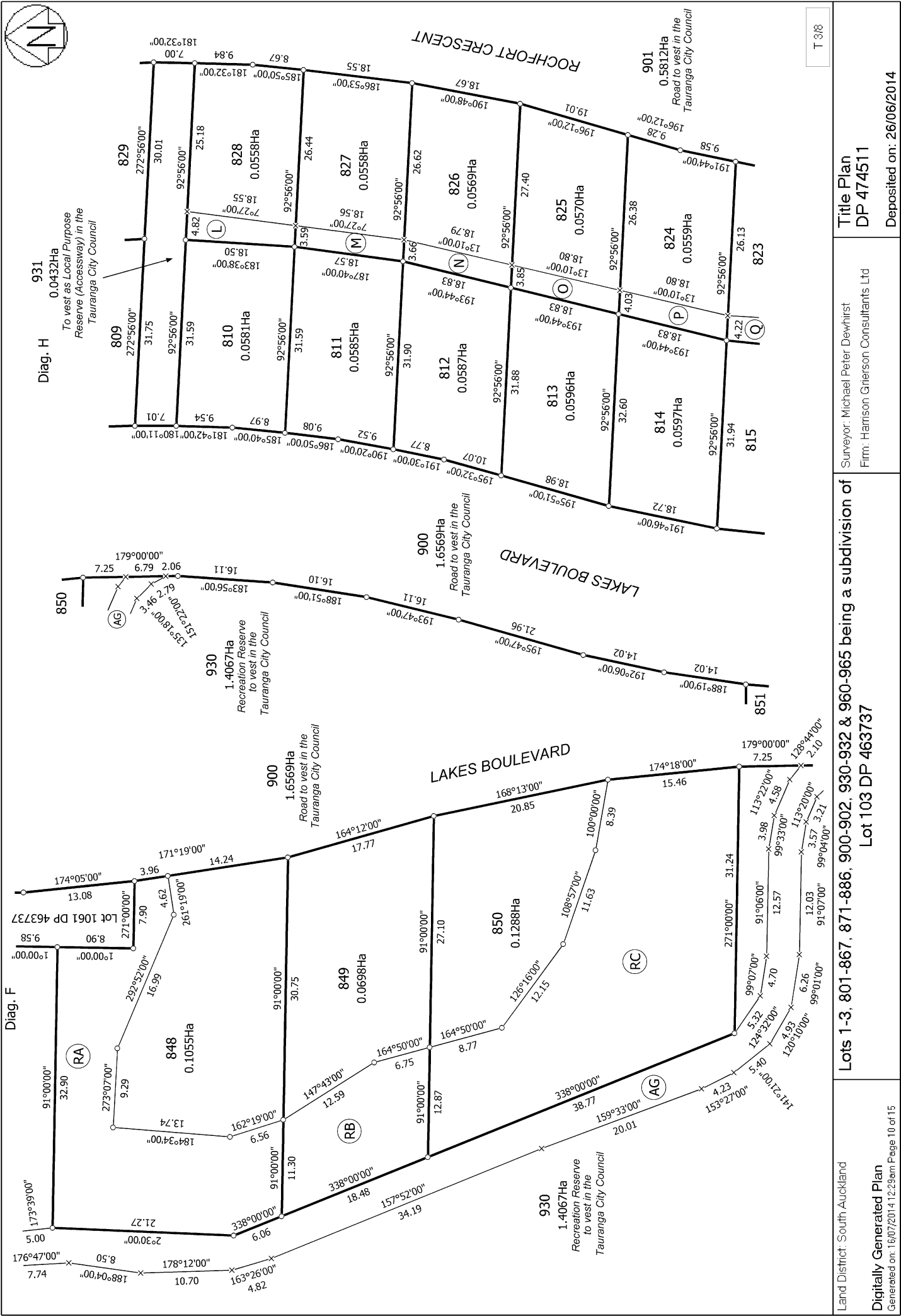
DP 474511

Surveyor: Michael Peter Dewhirst

Firm: Harrison Grierson Consultants Ltd

Deposited on: 26/06/2014

Lots 1-3, 801-867, 871-886, 900-902, 930-932 & 960-965 being a subdivision of Lot 103 DP 463737



T 3/8

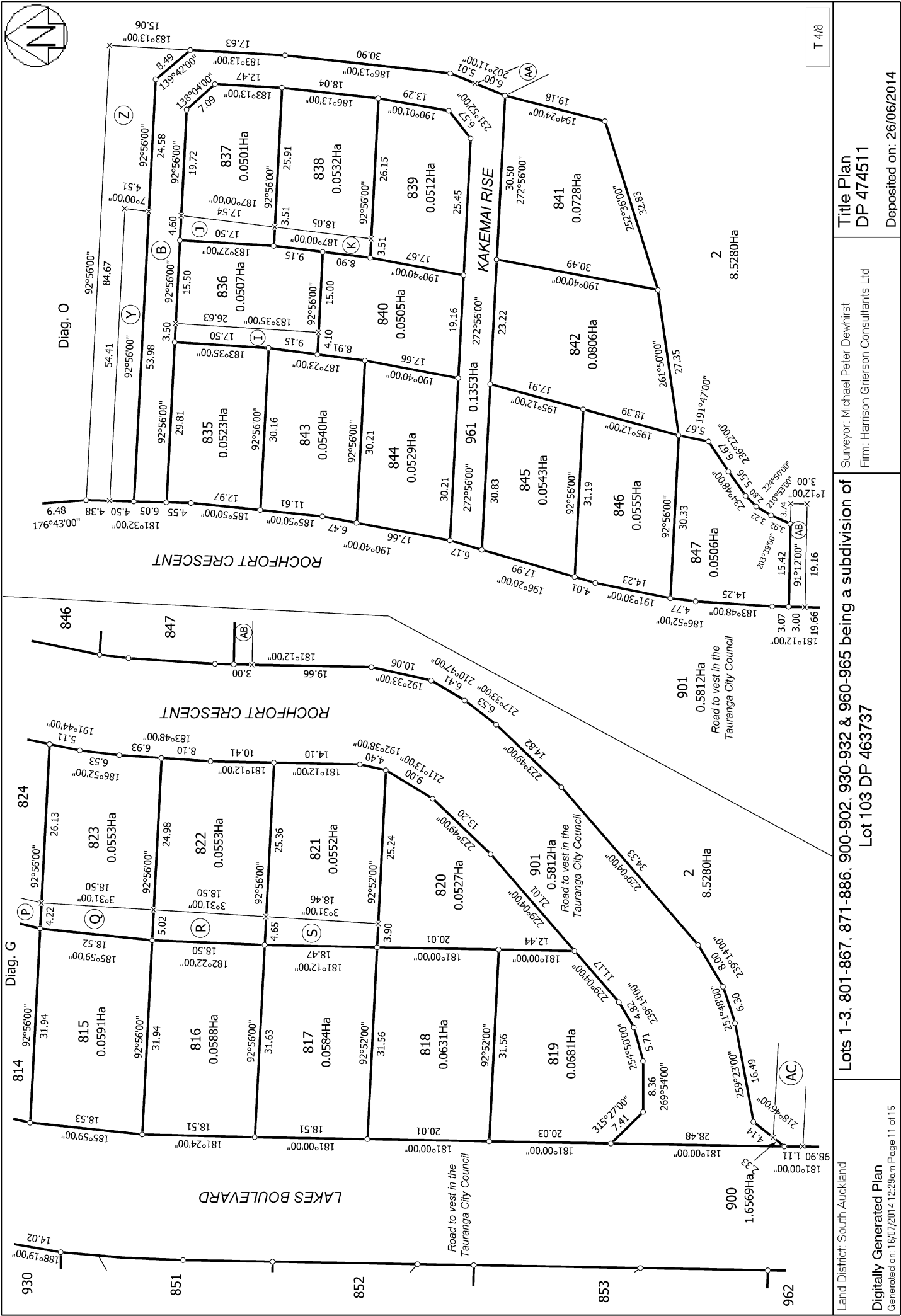
Land District: South Auckland
 Digitally Generated Plan
 Generated on: 16/07/2014 12:29pm Page 10 of 15

Surveyor: Michael Peter Dewhurst
 Firm: Harrison Grierson Consultants Ltd

Title Plan
 DP 474511

Lots 1-3, 801-867, 871-886, 900-902, 930-932 & 960-965 being a subdivision of Lot 103 DP 463737

Deposited on: 26/06/2014



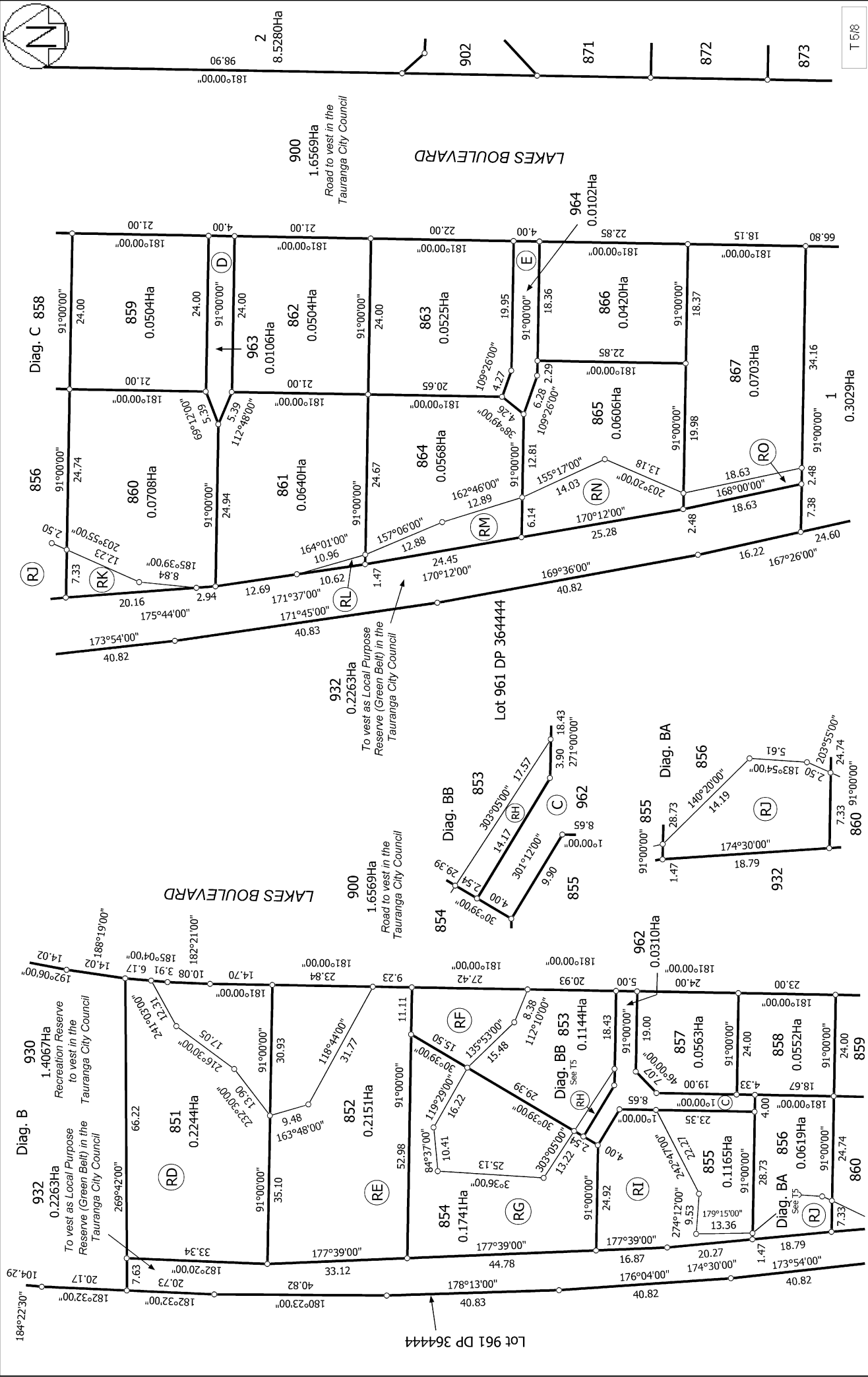
T 4/8

Lots 1-3, 801-867, 871-886, 900-902, 930-932 & 960-965 being a subdivision of Lot 103 DP 463737

Surveyor: Michael Peter Dewhirst
 Firm: Harrison Grierson Consultants Ltd

**Title Plan
 DP 474511**

Deposited on: 26/06/2014



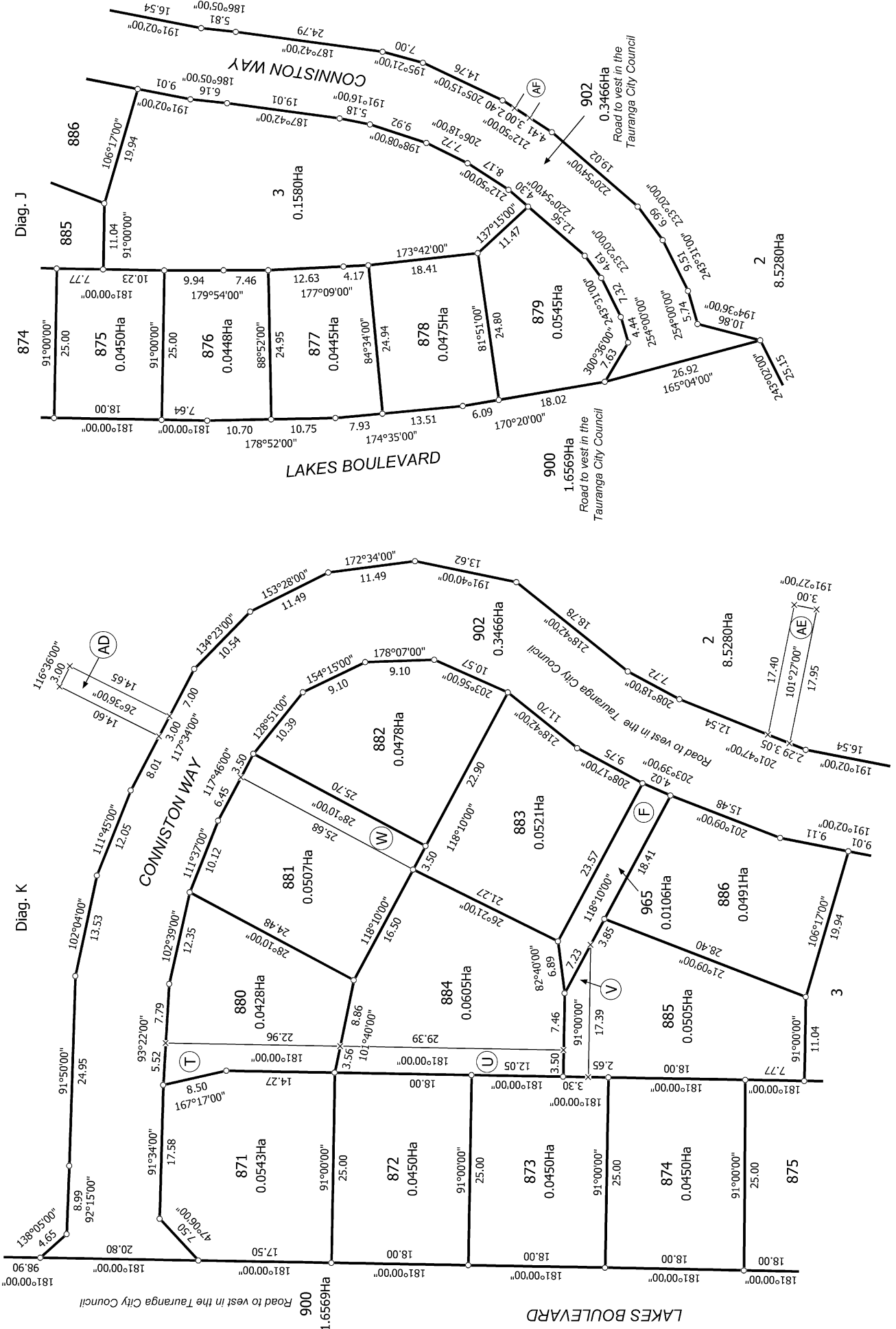
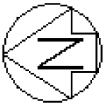
T 5/8

Land District: South Auckland
 Digitally Generated Plan
 Generated on: 16/07/2014 12:29:59; Page 12 of 15

Surveyor: Michael Peter Dewhirst
 Firm: Harrison Grierson Consultants Ltd

Title Plan DP 474511
 Deposited on: 26/06/2014

Lots 1-3, 801-867, 871-886, 900-902, 930-932 & 960-965 being a subdivision of Lot 103 DP 463737



T 6/8

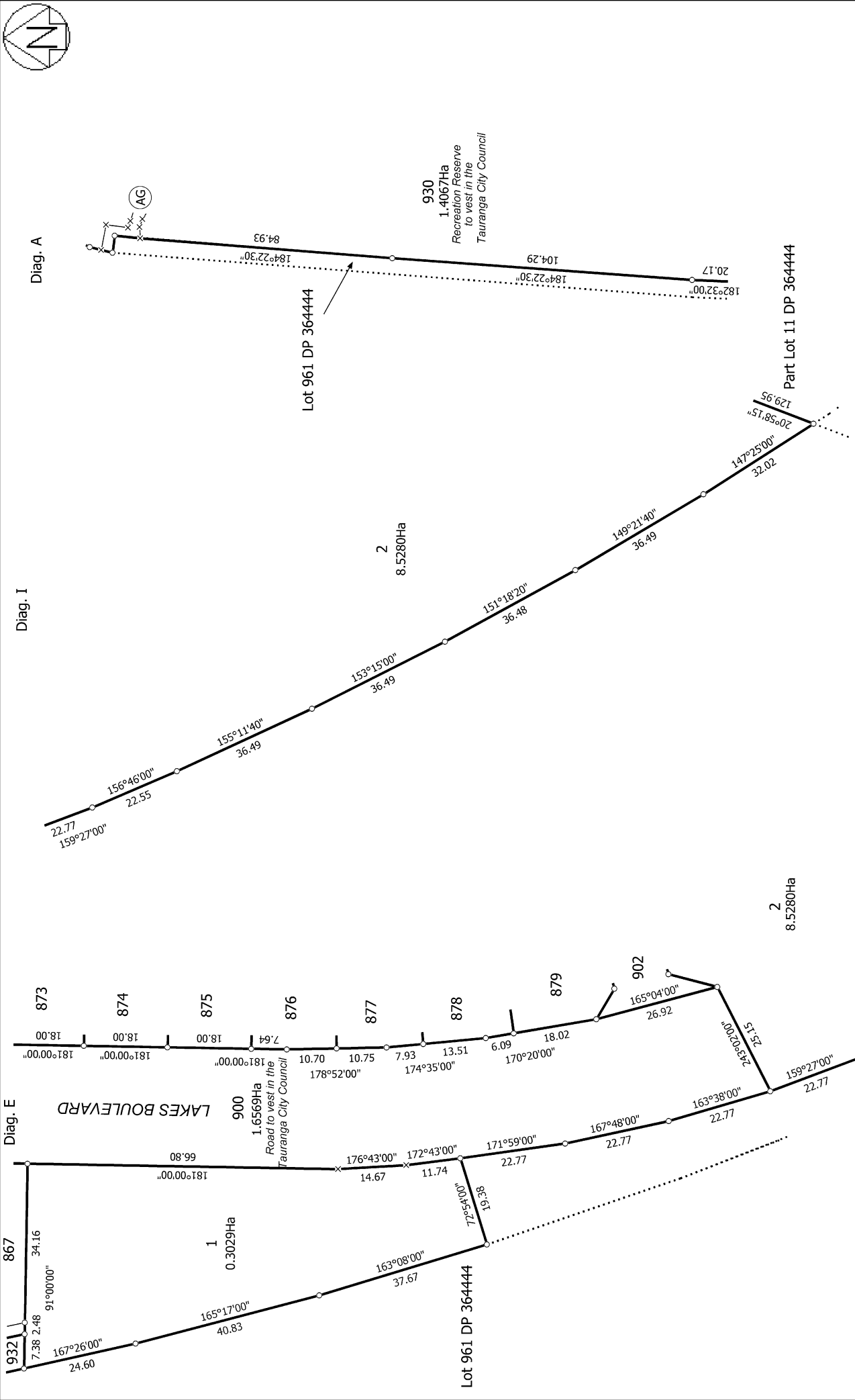
Title Plan
DP 474511

Surveyor: Michael Peter Dewhurst
Firm: Harrison Grierson Consultants Ltd

Lots 1-3, 801-867, 871-886, 900-902, 930-932 & 960-965 being a subdivision of
Lot 103 DP 463737

Land District: South Auckland
Digitally Generated Plan
Generated on: 16/07/2014 12:29pm Page 13 of 15

Deposited on: 26/06/2014



T 7/8

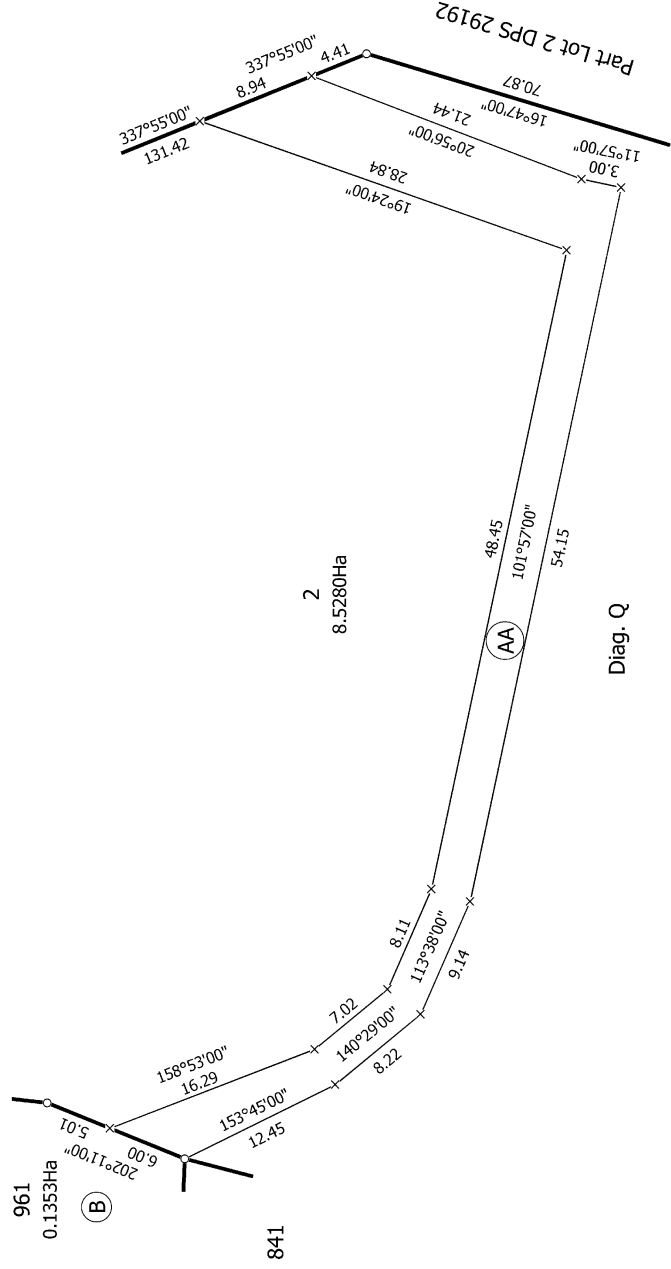
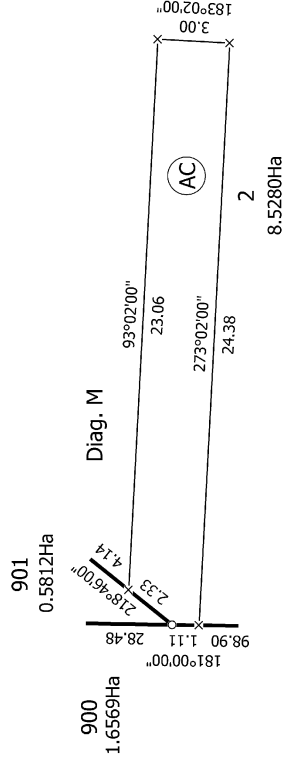
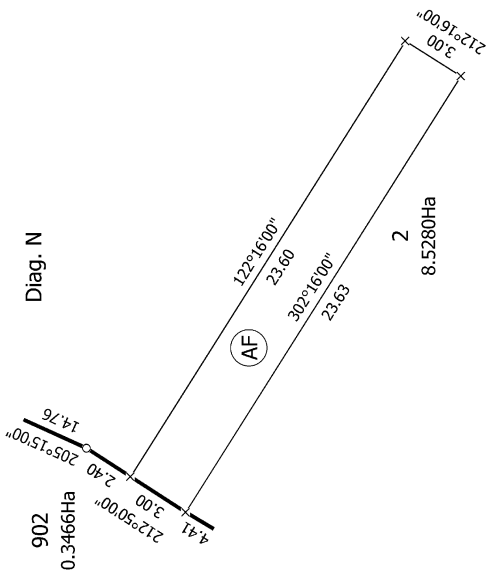
Title Plan DP 474511

Surveyor: Michael Peter Dewhirst
Firm: Harrison Grierson Consultants Ltd

Lots 1-3, 801-867, 871-886, 900-902, 930-932 & 960-965 being a subdivision of Lot 103 DP 463737

Land District: South Auckland
Digitally Generated Plan
Generated on: 16/07/2014 12:28pm Page 14 of 15

Deposited on: 26/06/2014



T 8/8